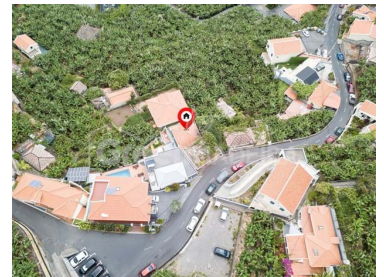





## Ponta do Sol - Villa



 1	 1	 116	 100	 N/A	<b>N/A</b>
Bedrooms	Bathrooms	Area (m <sup>2</sup> )	Land Area (m <sup>2</sup> )	CLASSE ENERGÉTICA	(EUR €)

## Paradise in Ponta do Sol: 1 Bedroom Villa with Sea View and Approved Expansion Project

Situated in the tranquil Lugar de Baixo site in Ponta do Sol, this charming 1 bedroom villa offers an idyllic coastal retreat. The property has a generous patio that provides an extra space for leisure and socializing.

The upper balcony offers a beautiful view of the sea, as well as a perfect space to relax and enjoy the natural beauty of the region.

Inside, the villa consists of an equipped kitchen, living room, bathroom and a spacious bedroom. On the second floor, the attic offers a comfortable storage area, with great potential to be transformed into another bedroom. With an expansion project already approved, the possibilities for adapting this space are numerous, allowing the house to grow along with the needs of its future



**Bruno Reis**

912550414 <sup>2</sup>

brunoreis@greenmadeira.com

T +351 968296936 / 912550414 · T +351 912550414 <sup>2</sup> · E geral@greenmadeira.com

Rampa dos Piornais, Edifício Horizonte nº18, loja .....  
AMI 20107

<sup>1</sup> (Call to national fixed network) | <sup>2</sup> (Call to national mobile network)



owners.

## Property Features

- Washing machine
- Equipped kitchen
- Terrace
- Views: Sea views, Countryside views
- Walking distance to beach
- Energetic certification: Exempt
- Mains water
- Fitted wardrobes
- Proximity: Beach, Restaurants, Public Transport
- Floors: 2
- Double glazing
- Quiet Location
- Solar orientation: South, East
- Balcony



**Bruno Reis**

912550414 <sup>2</sup>

brunoreis@greenmadeira.com

**T +351 968296936 / 912550414 · T +351 912550414 <sup>2</sup> · E geral@greenmadeira.com**

**Rampa dos Piornais, Edifício Horizonte nº18, loja .....  
AMI 20107**

<sup>1</sup> (Call to national fixed network) | <sup>2</sup> (Call to national mobile network)